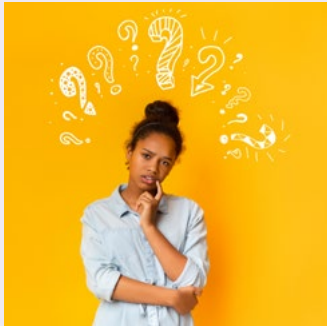




The Dominican
COMMUNITY of SCHOOLS

TN Department of
Education
ESA PROGRAM



What is the Education Savings Account (ESA) Program?

Education Savings Accounts are administered by the Tennessee Department of Education. ESA funds provide additional school choices to families who are zoned to a Memphis/Shelby County public school and are income-eligible. Families can utilize ESA funds toward tuition, fees, books, and other educational expenses at participating private schools.



Who is eligible?

For information on ESA eligibility, visit <https://esa.tnedu.gov/> or view the ESA Program Eligibility Worksheet [HERE](#).



How to enroll?

- Complete the ESA Program Application for students.
- **Contact the SAA-SDS Admissions Office at [\(901\) 435-5819](tel:9014355819).**

For assistance in Spanish, contact Leticia Mendoza at [\(901\) 435-5819](tel:9014355819).

St. Agnes Academy and St. Dominic School • 4830 Walnut Grove Road • Memphis, TN 38117
admissions@saa-sds.org • www.saa-sds.org • [901-435-5819](tel:9014355819)